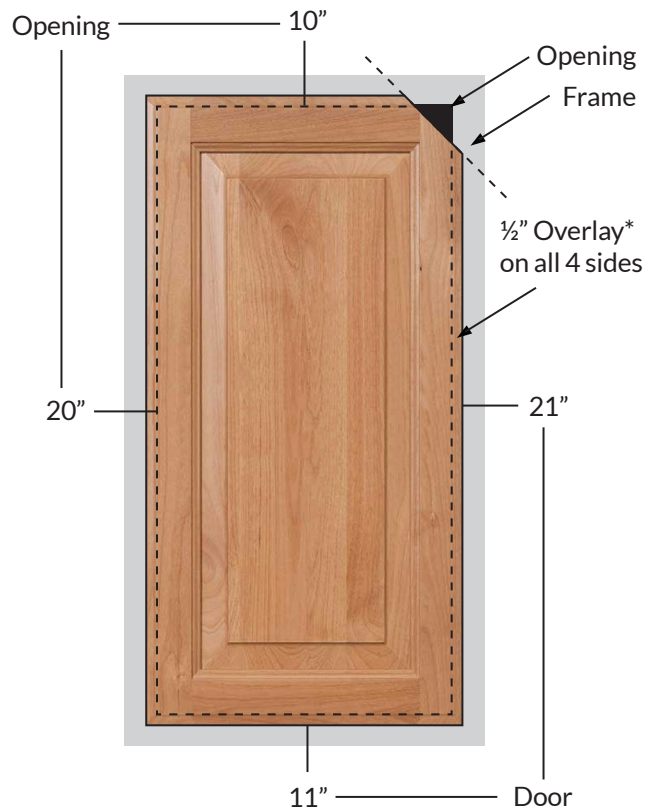


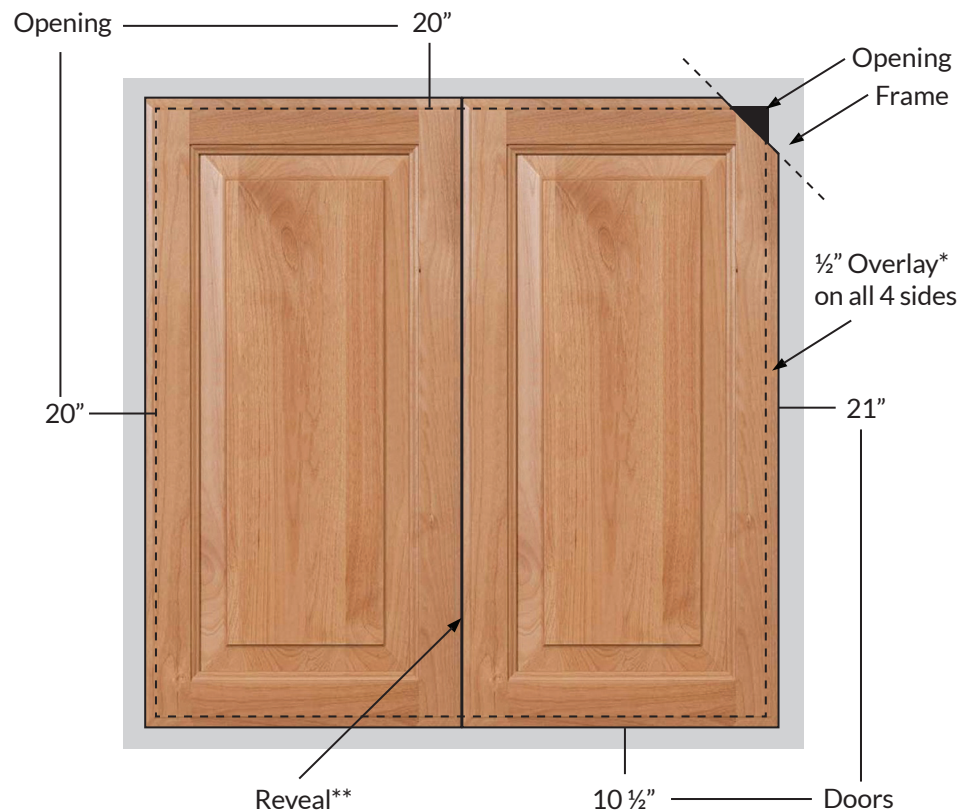
## SINGLE DOORS

All single and double doors require at least a ½ inch overlay\* on all 4 sides, so if your opening is 10" w x 20" h, the door size would be 11" w x 21" h.



## DOUBLE DOORS

All single and double doors require at least a ½ inch overlay\* on all 4 sides, so if your opening is 20" w x 20" h, the door sizes would be (2) 10 ½" w x 21" h.



\*Overlay: The area of the door that overlaps onto the frame.

\*\*Reveal: The space between two double doors.

# About Your Space | Cabinet Door Measurements

YOUR CABINET'S MEASUREMENTS					YOUR ORDER			
	Opening Width (in)	Opening Height (in)	Reveal Between Double Doors (in)	Desired Overlay (in)	Single Doors		Double doors	
					Width (in)	Height (in)	Width (in)	Height (in)
Door 1								
Door 2								
Door 3								
Door 4								
Door 5								
Door 6								
Door 7								
Door 8								
Door 9								
Door 10								
Door 11								
Door 12								
Door 13								
Door 14								
Door 15								
Door 16								
Door 17								
Door 18								
Door 19								
Door 20								

Pro Tip: Enter these numbers into the Door Measurement Calculator on our website for automated door measurements!  
[www.fastcabinetdoors.com/door-measurement-calculator](http://www.fastcabinetdoors.com/door-measurement-calculator)